



International Student Admissions Booklet

MERCER
County Community College
www.mccc.edu

Please return the completed application to:

Mercer County Community College
Admissions and Outreach Department
International Student Services
1200 Old Trenton Road
West Windsor, NJ 08550



for your interest in Mercer County Community College. Mercer is a two-year co-educational college located in central New Jersey. The school is approved by the United States Department of Education. The college is fully accredited by the Middle States Association of Colleges and Schools and authorized by the New Jersey Board of Higher Education to award the associate degree. The college is authorized by the United States Citizenship and Immigration Service to sponsor F-1 international students.

All applicants seeking F-1 visa status and wish to obtain I-20 **MUST** complete this application for admission to the College. Make note of all the required documents needed to complete your application. A \$50.00 nonrefundable fee is required with your completed application. This must be either a check or money order payable to Mercer County Community College.

Applications are processed in the order in which they are received. Calling or e-mailing to enquire about the status of your application will not expedite the reviewing of your application.

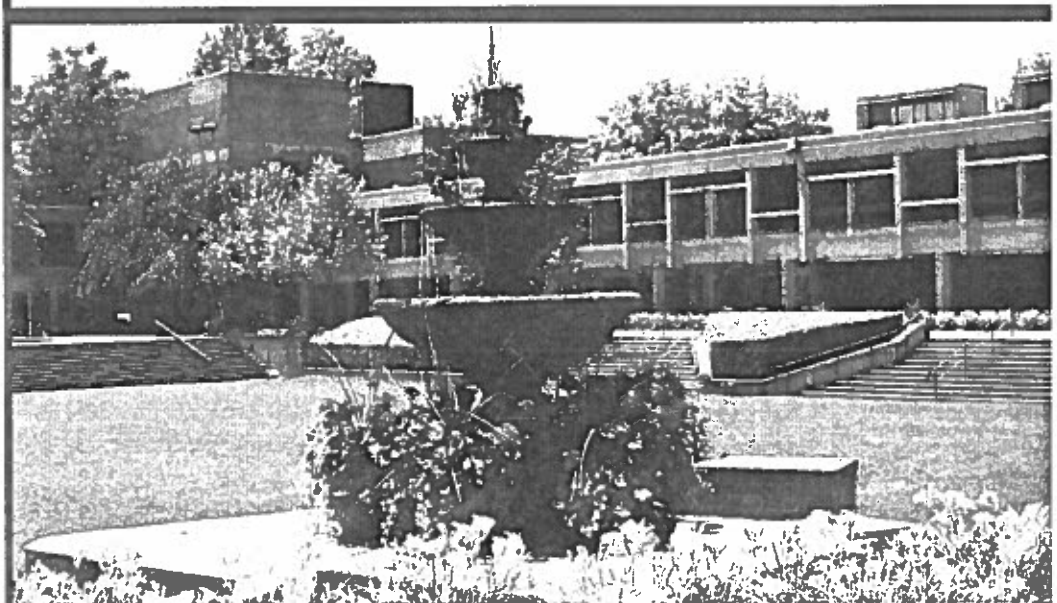
Applicants will be notified about the status of their application via mail/e-mail within 4 weeks of submitting the application.



Phone: 609-570-3438

Fax: 609-570-3861

international@mccc.edu





IMMUNIZATION RECORD

The state of New Jersey enacted a law in 1995 requiring each full-time student to provide the college with a valid record of immunization, verifying two (2) live doses of the MMR (Mumps, Measles and Rubella) vaccine or verification of immunity.

 Family Name Given Name Social Security/ Student ID#

 City State/Country Zip Code Phone Number

 First Enrolled (Month/Year) Birth Date (Month/Day/Year) Sex ___ M ___ F

Date of Live Doses of Vaccines

	1st	2nd
MMR	_____	_____
Measles	_____	_____
Mumps	_____	_____
Rubella	_____	_____
Hepatitis B	_____	_____
OR		
Blood Test		
Date _____		
Measles Titer	_____	_____
Mumps Titer	_____	_____
Mumps Diagnosis	_____	_____
Rubella Titer	_____	_____
Hepatitis B	_____	_____

 Physician's Signature Physician's # Date

- I am exempt for medical reasons. Documentation from my physician is attached.
- I am exempt for religious reasons. Documentation from my religious official is attached.
- I am exempt because I was born before 1957.

 Student's Signature Date

Note: You can satisfy this requirement by submitting either this form with a signature from a physician in your home country or a physician in the U.S., or a health record (in English) that documents your immunization.

MERCER
 County Community College
www.mccc.edu

Phone: 609-570-3438

Fax: 609-570-3861

international@mccc.edu



REMEMBER TO READ, SIGN AND MAIL THIS DOCUMENT WITH YOUR APPLICATION!

Terms and Conditions Concerning F-1 Student Visa/Status

Read everything on this page carefully and be sure that you understand the terms and conditions concerning your admission and stay in the United States as a nonimmigrant F-1 visa / status student.

You are **REQUIRED** to sign and date this document and submit it to the International Services Offices before your SEVIS I-20 is released to you. Please mail this document along with your application materials.

- 1. Admission.** As a nonimmigrant F-1 visa / status student you will be admitted to the United States for the "duration of status". This means that you are authorized to stay in the United States for the entire length of time during which you are enrolled as a full-time (12 credits or more) student in an associate degree program at Mercer County Community College (MCCC) and any period of authorized practical training plus sixty days. MCCC will issue the SEVIS form I-20 to you to complete your associate degree within the time specified on the I-20. This SEVIS I-20 does not contain any provision to complete a bachelor's degree with another college or university. You may continue from one educational level to another, such as progressing from associate program to a bachelor's program or a bachelor's program to a master's program, by invoking the procedures for school transfer. While in the United States, you must maintain a valid foreign passport.
- 2. School.** For initial admission, you must attend the school specified on your visa. If you have a SEVIS Form I-20 from more than one school, it is important to have the name of the school you intend to attend specified on your visa by presenting a SEVIS Form I-20 from that school to the visa issuing consular office. Failure to attend the specified school will result in the loss of your student status and may subject you to deportation.
- 3. Enrollment.** As an international F-1 student visa / status holder, you must make normal academic progress towards your degree. You must not withdraw yourself from any class without **PRIOR** approval from the International Student Services Office. Summer enrollment at MCCC is optional. An F-1 student is limited to one on-line or distance learning course (3 credits) as a part of his/her full course load at MCCC every semester.
- 4. Reentry by travel.** A nonimmigrant F-1 visa / status student may be readmitted after a temporary absence of five months or less from the United States, if the student is otherwise admissible. You may be readmitted by presenting a valid foreign passport, a valid visa, and either a new SEVIS Form I-20 or page 3 of the SEVIS Form I-20 properly endorsed for reentry. You must get this endorsement from the International Student Services Office prior to your travel.
- 5. Transfer.** A nonimmigrant F-1 visa / status student is permitted to transfer to a different school provided the transfer procedure is followed. To transfer schools, you should first notify the school you are attending of the intent to transfer, and then obtain a SEVIS Form I-20 from the school you intend to attend. Transfer will be affected only if you return the SEVIS Form I-20 to the designated school official within 15 days of beginning attendance at the new school. The designated school official will then report the transfer to the United States Citizenship and Immigration Services.
- 6. Extension of stay.** If you cannot complete the educational program within the time specified on your SEVIS Form I-20, you must apply for an extension of stay. An application for extension of stay must be filed with the International Student Services Office at least 60 days before the expiration of your SEVIS I-20.
- 7. Employment.** As an F-1 student, you are not permitted to work off campus or to engage in business without specific employment authorization. After your first year in F-1 student status, you may apply for employment authorization based on your need. If applying for post completion full-time Optional Practical Training (OPT), you must submit application to the International Student Services Office **AT LEAST 45 days PRIOR** to your graduation or program completion date (which ever is earlier). Please note that if during this time, you decide to transfer to another college, your OPT will be terminated.

MERCER
County Community College
www.mccc.edu

Phone: 609-570-3438

Fax: 609-570-3861

international@mccc.edu



8. **Notice of address.** If you move, you must submit a notice within 10 days of the change of address to the U.S Department of Homeland Security, Bureau of Citizenship and Immigration, Change of Address. This is reported on immigration Form AR-11 which is available in the International Student Services Office.
9. **Arrival/Departure.** When you leave the United States, you must surrender your Form I-94 Departure Record. Please see the back side of Form I-94 for detailed instructions. You do not have to turn in your I-94 if you are visiting Canada, Mexico, or adjacent islands other than Cuba for less than 30 days.
10. **Financial Support.** You must demonstrate that you are financially able to support yourself for the entire period of stay in the United States while pursuing a full course of study. You are required to provide documentary evidence of means of support when applying for a SEVIS I-20 from Mercer County Community College.
11. **Authorization to Release Information by School.** To comply with requests from the United States Citizenship and Immigration Service for information on student status, you are required to give authorization to Mercer County Community College to release such information from your records. The school will provide the United States Citizenship and Immigration Service your name, country of birth, current address, and any other information on a regular basis or upon request.
12. **Penalty / Reinstatement.** To maintain your nonimmigrant F-1 student visa / status, you must comply with all the F-1 regulations. Failure to comply with these regulations will result in the loss of your student status and may subject you to deportation. If you violate your immigration status, you may apply for reinstatement with the immigration district director provided you fulfill all the conditions for reinstatement. The request for reinstatement **MUST** be filed within the 5 month period of being in violation / out of status. After this five month period, you will not be eligible to file for reinstatement. For detail information and help in immigration matters, please contact the International Student Services Office phone 609-570-3438 or email international@mccc.edu
13. Please note that the law provides severe penalties for knowingly and willfully falsifying or concealing a material fact, or using any false document to obtain SEVIS form I-20.

Student Certification

I have read and agreed to comply with the terms and conditions of my admission and those of any extension of stay as specified above. I understand that it is my responsibility to make sure that I do not violate the terms and conditions of my F-1 student visa / status.

Student's Name

Student's Signature

Date

MERCER
County Community College
www.mccc.edu

Phone: 609-570-3438

Fax: 609-570-3861

international@mccc.edu

