

MERCER COUNTY COMMUNITY COLLEGE
DIVISION OF HEALTH PROFESSIONS
DEPARTMENT OF NURSING
OBJECTIVES AND DIRECTIONS FOR STUDENTS ATTENDING
EMS OBSERVATION

Students will:

1. Observe the paramedic provide advanced life support to critically ill clients who are being transported to the emergency department via ambulance
2. Identify the skills that the paramedic must have to perform this role
3. Identify the certifications and education of paramedics
4. Observe the procedures performed in the ambulance: cardiac monitoring, advanced airway management, possible intubation, establishing intravenous access and administering medications en route to the emergency department
5. Assist in evaluating vital signs as directed by the paramedic
6. Assist in a physical assessment of the client as directed by the paramedic.
7. Observe how the paramedic sets priorities with the care provided to the client
8. Observe changes that occur with the care provided by the paramedic
9. Observe communication strategies that the paramedic has with the client
10. Observe communication paramedic has with the base physician
11. Be able to report your experience at next clinical post conference

CONTACT PERSON: William Rosen, Coordinator

C:609-685-8222; W:609-815-7498; Email: wrosen@capitalhealth.org

QUESTIONS: Call Laurie Roe in the Clinical Office:609-394-4215

PREPARATION:

Must have ORIENTATION WHICH INCLUDES

1. TB mask fit tested before your scheduled shift/experience.
2. Must complete the Capital Health orientation packet, sign the back sheet
3. Must have malpractice insurance, updated CPR, updated PPD, updated health requirements for the nursing program
4. Must wear appropriate uniform which can be borrowed from EMS
5. Must review calendar provided by Coordinator as to assigned unit (indicated next to your name)
6. Must review locations of various units

MERCER COUNTY COMMUNITY COLLEGE
DIVISION OF HEALTH PROFESSIONS
DEPARTMENT OF NURSING
OBJECTIVES AND DIRECTIONS FOR STUDENTS ATTENDING
EMS OBSERVATION



Student/Observer Ride Along Information Guide from Capital Health EMS Department

Capital Health Mobile Intensive Care Unit

SHIFTS: Day shift: 7:00 a.m.-7:00 p.m. *Monday- mid shift 3:00 p.m.-11:00 p.m. Night shift: 7:00 p.m.-7:00 a.m.

Students are expected to do a 6 hour shift; you have been offered a 12 hour shift if you wish, but you will only receive time back for the 6 hour shift. The 12 hour shift is totally optional.

Dress Code: Dark Pants-navy blue or black (no jeans, sweats or dress clothes)

White Shirt-plain, tucked in.

"Sturdy" dark shoes (no heels, clogs, or open toes)

Sweater, vest or sweatshirt-navy blue or black (optional)

Coat- must be Navy blue or black

Bring stethoscope

You may contact the EMS Clinical Office for "loaner" clothes-609-394-4215

No clothing worn may have logos, pictures or sayings on them.

You must blend in with the crew as a professional and representative of your program and Capital Health Emergency Medical Services.

Long Hair-should be pulled back.

Leave "face piercing" jewelry and other jewelry at home.

Pants cannot be the "baggy" look with undergarments showing.

MERCER COUNTY COMMUNITY COLLEGE
DIVISION OF HEALTH PROFESSIONS
DEPARTMENT OF NURSING
OBJECTIVES AND DIRECTIONS FOR STUDENTS ATTENDING
EMS OBSERVATION

You have the potential to be out in any kind of weather for extended periods of time. Dress in layers and bring extra clothes with you including hats, gloves and boots.

THIS CAN BE A LONG DAY- It's OK to bring something to do if you have down time between 911 assignments—book to read, newspaper, magazine, etc.

Food-Breakfast, snacks and lunch/dinner cannot be scheduled or guaranteed. The best thing to do is bring food and drinks with you in an insulated lunch bag; a thermos of coffee/hot chocolate or even soup is OK as well.

Report to station assignment at least 15 minutes prior to start of shift. Arriving just at shift change or late will increase the probability of missing the MICU in station. It is possible then for the MICU to be "stuck" on back-to-back jobs and delayed in getting back to station to get you. Don't panic if the MICU is not there when you arrive, they may already be on a call. If the MICU is not back by the beginning of shift you may call the **non emergency # 609-394-3609** for truck status.

Plan ahead: It's a good idea to take a ride to your assigned station sometime BEFORE your actual ride date. This way you are familiar with where you are going and how long it takes to get there.

Do not schedule anything else to do 2-3 hours after your shift on the day you are riding. Due to the nature of 911 emergencies, you will not be guaranteed to get off the truck by a certain time—even at the end of shift.

We try to inform all the crews and Tour Chiefs of the ride along schedule, but occasionally your arrival may be a surprise. Our crews have always enjoyed the Rider Student "experience" and vice versa.

Please feel free to contact the Clinical Office (Laurie Roe) with any concerns or questions at 609-394-4215. We would like to hear about any

MERCER COUNTY COMMUNITY COLLEGE
DIVISION OF HEALTH PROFESSIONS
DEPARTMENT OF NURSING
OBJECTIVES AND DIRECTIONS FOR STUDENTS ATTENDING
EMS OBSERVATION

part of your experience and get feedback from you, good, bad or in between.
Your input is valuable and used to make changes.

ASSIGNMENT:

*Your assignment will come out once a month from the EMS Coordinator.
He will send it to the Coordinator of the Course and then you will receive it
via email. Your date of EMS will be on the clinical schedule, but the location
will be assigned later.*

MERCER COUNTY COMMUNITY COLLEGE
DIVISION OF HEALTH PROFESSIONS
DEPARTMENT OF NURSING
OBJECTIVES AND DIRECTIONS FOR STUDENTS ATTENDING
EMS OBSERVATION

Location Information: indicated by name and #

**Mobile Intensive Care Unit (MICU):Life 791 Days-
Located at Fuld campus of CHS on Fuld Street.**

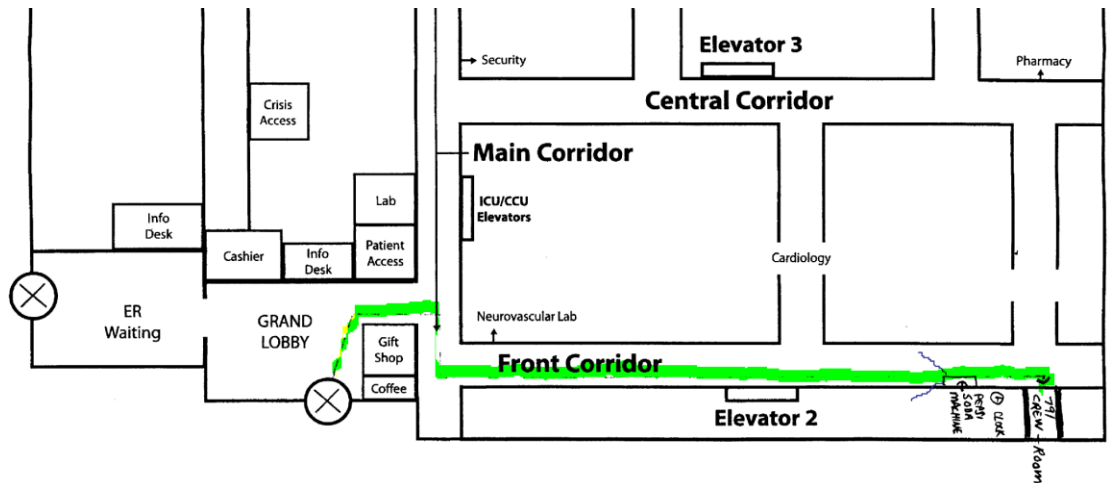
From Interstate 195 west take Route 129 North to Route 1 North.
Take to Olden Avenue exit (on the left)
At end of ramp stay in left lane to traffic light.
Turn left onto Olden Ave. go to next light at Brunswick Ave.
Turn left onto Brunswick Ave. and go a couple blocks-
CHS Fuld is on your left- **Turn Right** to enter the main parking lot (Visitors and Patients).
Go straight to the back of the lot- **DO NOT PARK IN RESERVED OR STAFF AREAS.**

OR

From Route 1 South go to the Brunswick Circle.
Go half way around the circle and continue on Brunswick Pike
Go through traffic lights, cross over Olden Ave. and go a couple of blocks-
CHS Fuld is on your left- **Turn Right** to enter the main parking lot (Visitors and Patients).
Go straight to the back of the lot- **DO NOT PARK IN RESERVED OR STAFF AREAS.**

***LOCK YOUR VEHICLE AND DO NOT LEAVE VALUABLES IN SIGHT**

Cross the street to the Main Entrance-(circular door under the slanted roof) and enter the Grand Lobby. Follow the map below to the **CHS Paramedic 791** crew door.



NOTE: If no one answers the door, call the 791 office # 609-278-6971-
If no answer, call LifeCom 609-394-3609 to find out the status of when the unit will be returning and let the dispatcher know you have arrived and are waiting for them.

MERCER COUNTY COMMUNITY COLLEGE
DIVISION OF HEALTH PROFESSIONS
DEPARTMENT OF NURSING
OBJECTIVES AND DIRECTIONS FOR STUDENTS ATTENDING
EMS OBSERVATION

Location Information indicated by name and #

Specialty Care Transport Unit (SCTU-CCD) and Life 795

Life 795 and SCTU-Located at Station 179, 65 Prospect Street

From Interstate 195 west to Route 29 north

Continue on Rte 29 through the tunnel to the Calhoun St. exit on the right

At end of ramp get in left lane- turn left (first light) onto West State Street.

Turn right at light onto Prospect Street

Pass Station 179 (EMS Headquarters) on the left to the traffic light on Bellevue Ave.

Turn left at light and make 1st left into gated parking lot (gate will open automatically).

Park in lot to your LEFT-**careful this is a blind corner!**

Walk through the gate to the front of the EMS building.

Or

From Route 1 south go to Brunswick Circle

On circle make second right curving around onto Princeton Ave.

(If you go one too far to Brunswick Ave. it's OK-follow the same directions below)

Go to traffic light at Olden Ave and turn right

Continue up Olden Ave. to light at Prospect St. and turn left

Continue down Prospect to the light at Bellevue Ave.

Turn right at light and make 1st left into gated parking lot (gate will open automatically).

Park in lot to your LEFT-**careful this is a blind corner!**

Walk through the gate to the front of the EMS building.

******DO NOT PARK IN FRONT OF THE BUILDING******

******DO NOT PARK IN AMBULANCE PARKING LOT******

Go to the front of the building and ring the doorbell and the intercom will ask you to identify yourself. Please say, "I am _____ from _____ to observe with unit_____."

If no answer, call the secretary Connie at 609-815-7000 or LifeCom at 609-394-3609 to let you in.

Once inside, go down to the Tour Chief office/EMS lounge and report in to meet your crew.

MERCER COUNTY COMMUNITY COLLEGE
DIVISION OF HEALTH PROFESSIONS
DEPARTMENT OF NURSING
OBJECTIVES AND DIRECTIONS FOR STUDENTS ATTENDING
EMS OBSERVATION

Location Information indicated by name and number

Station 17 for Life 793- Nottingham Fire House at 200 Mercer St. in Mercerville section of Hamilton Township. Take Route 295 to exit for Route 33 East. From North 295 exit onto Nottingham Way and stay straight. From South 295 exit onto East State Street Extension. Go to end and turn left onto Nottingham Way. These will both take you to a traffic light where Nottingham, Quaker bridge, Edinburgh and Whitehorse- Mercerville roads converge, called "Five Points." Continue with a right bearing to stay on Nottingham way. Take approximately one mile to Mercer Street and turn left. Firehouse is on right a few blocks up. Parking provided in large east lot. Must have crew available to enter, no code. You can ring the bell if before 11PM. After 11PM the Fire Fighters are sleeping and you must contact the on duty crew

Initiated 2008
Revised 2009, 2010