

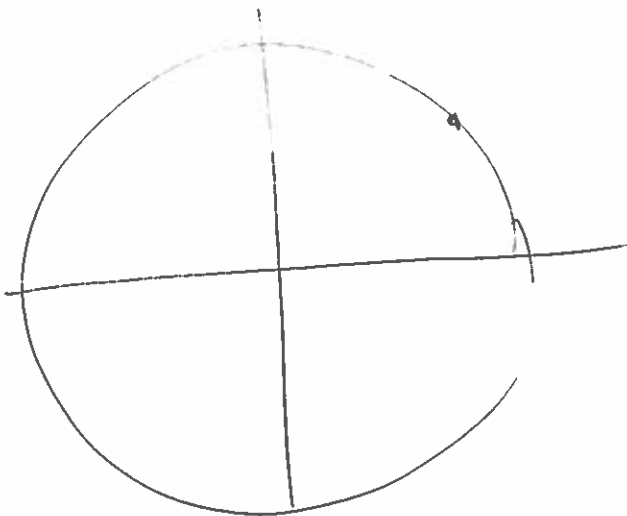
Special Angles

θ	0° or 0	30° or $\frac{\pi}{6}$	45° or $\frac{\pi}{4}$	60° or $\frac{\pi}{3}$	90° or $\frac{\pi}{2}$
(X) $\cos(\theta)$	$\frac{\sqrt{4}}{2}$	$\frac{\sqrt{3}}{2}$	$\frac{\sqrt{2}}{2}$	$\frac{\sqrt{1}}{2}$	$\frac{\sqrt{0}}{2}$
(Y) $\sin(\theta)$	$\frac{\sqrt{0}}{2}$	$\frac{\sqrt{1}}{2}$	$\frac{\sqrt{2}}{2}$	$\frac{\sqrt{3}}{2}$	$\frac{\sqrt{4}}{2}$

(X) \cos	1	$\frac{\sqrt{3}}{2}$	$\frac{\sqrt{2}}{2}$	$\frac{1}{2}$	0
(Y) \sin	0	$\frac{1}{2}$	$\frac{\sqrt{2}}{2}$	$\frac{\sqrt{3}}{2}$	1
$m = \frac{y}{x} \tan$	0	$\frac{1}{\sqrt{3}}$ $\frac{\sqrt{3}}{3}$	1	$\sqrt{3}$	undefined

$\therefore \text{slak... } \frac{\sqrt{3}}{2}$

$1.73... = \sqrt{3}$



$\tan^{-1} \rightarrow$ inverse tangent

$\frac{1}{\tan \theta} = \cot \theta$
"cotangent"

$\frac{1}{\cos \theta} = \sec \theta$
"secant"

$\frac{1}{\sin \theta} = \csc \theta$
"cosecant"

$$\cos\left(\frac{\pi}{3}\right) = \frac{1}{2} = .5$$

$$\sin\left(\frac{\pi}{3}\right) = \frac{\sqrt{3}}{2} = .866.$$

$$\tan\left(\frac{\pi}{3}\right) = \sqrt{3} = 1.73$$


$$\cot\left(\frac{\pi}{3}\right) = \frac{\sqrt{3}}{3} = .577.$$

$$\sec\left(\frac{\pi}{3}\right) = 2 = 2$$

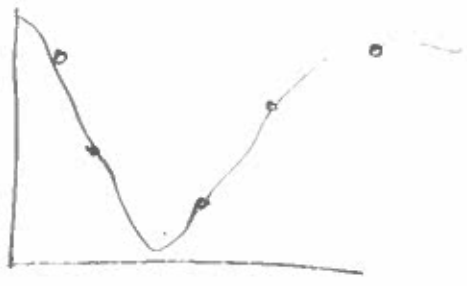
$$\csc\left(\frac{\pi}{3}\right) = \frac{2}{\sqrt{3}} = \frac{2\sqrt{3}}{3} = 1.15\dots$$

ALEXS



<p>GROUP NAME: <u>WFOF</u></p> <p>Logo: </p>	<p>Student Names (First and Last)</p> <p>Speaker/Presenter: <u>Justin</u></p> <p>Writer/Prep: <u>Elise</u></p> <p>QC/Leader: <u>Tabby Dallen Justin</u></p>
<p>Date: <u>10/15/13</u></p> <p>Topics:</p>	

Instructions:



\$ spent	violent acts
7	100
10	53
17	123
20	50
27	120

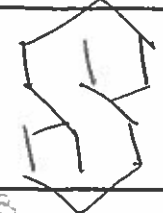
$$y = a \cdot \sin(b(x - c)) + d$$

$a = 0.2$
 $b = 2.91$
 $c = 11.6$
 $d = 73.07$

if we spend \$45,000, there
 will be 123 acts
 of violence

$$y = 56.63 \text{ acts} = (0.297x + 7.61) + 73.07$$

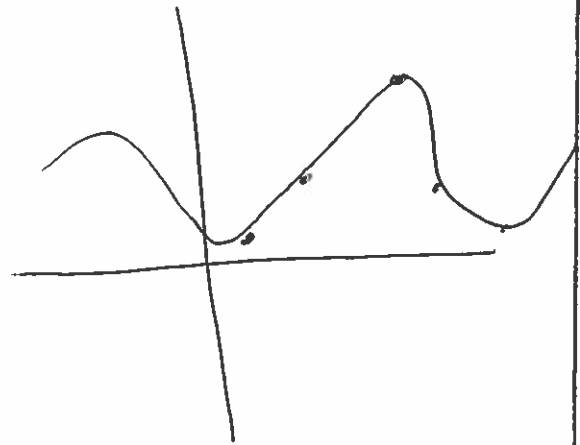
Spend \$45000 will result in acts of
 violence (17)

<p>GROUP NAME: </p> <p>Logo:</p>	<p>Student Names (First and Last)</p> <p>Speaker/Presenter: <u>David Gull</u></p>
<p>Date: <u>October 15, 2013</u></p> <p>Topics: <u>science</u></p>	<p>Writer/Prep: <u>Nisha [unclear]</u></p> <p>QC/Leader: <u>Jenna Glanzfalo</u></p>

Instructions:

Obesity rate in Louisiana

years.	% obese people in Louisiana.
1990	10
1995	17
2000	30
2005	17
2010	10



We predict
the obesity
rate will
go back
up

In 2014
obesity rate
will
increase
to 23%

GROUP NAME: M-CABS

Logo:

Student Names (First and Last)

Speaker/Presenter: Ammed

Date: 10/15/13

Writer/Prep: Jenna Ford

Topics:

QC/Leader: Ammed

Instructions:

Sinayag

[Faint handwritten notes and a table are visible in this section. The table has two columns labeled L1 and L2, with numbers 1, 2, 3, 4, 5 written in the rows. The notes are illegible due to fading.]

GROUP NAME: Biz Wizards

Logo: 

Student Names (First and Last)

Speaker/Presenter: Jason Hayes

Date: October 15, 2013

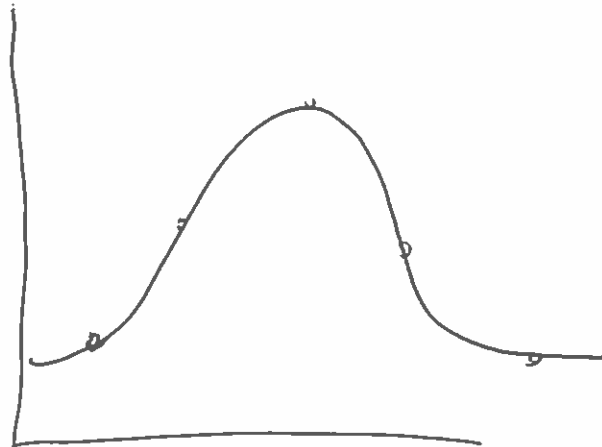
Writer/Prep: Rachel Paalston

Topics: Sine Regression

QC/Leader: ~~XXXXXXXXXX~~

Instructions:

L1	L2
2009	55
2010	60
2011	65
2012	60
2013	55



Microsoft's revenue will reach 62 billion in 2010 and in 2011.