

# Historical Perspectives on Abnormal Behavior

Chapter One  
Understanding Abnormality: A Look at History and Research Methods

1

---

---

---


---

---

---

---

---



## Class Objectives

- Historical Perspectives
- What is Clinical Assessment and why is it used?
- What assessment methods do professionals use?

2

---

---

---


---

---

---

---

---



“In Order to Understand the Future  
it is necessary to know and  
understand the past”

Psychopathology in a historical Context

3

---

---

---

---

---

---

---

---

### What Causes Abnormal Behavior?

Sociocultural Factors

---

---

---

---

---

---

---

---

### What Causes Abnormal Behavior?

Biological Factors

Psychological Factors

Sociocultural Factors

5

---

---

---

---

---

---

---

---

### Where did it all begin?

- Abnormal behavior and psychological disorders have been documented for thousands of years.
- Although many early “treatments” are now recognized as cruel and ineffective, they were

---

---

---

---

---

---

---

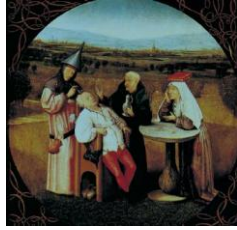
---

---

---

## Treatment was influenced by the social perception of mental illness

Very early in history (500-700 A.D) the problem was based on the medical model



7

---

---

---

---

---

---

---

---

Later in history (500-1700 A.D) due to the influence of the \_\_\_\_\_  
\_\_\_\_\_ for mental illness.



---

---

---

---

---

---

---

---

## 1700-1900 A.D

People with psychological disorders or "madmen" were seen as dangerous animals who should be caged in order to protect society.



---

---

---

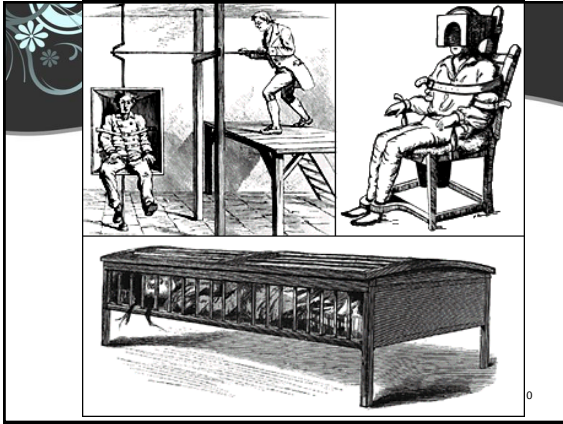
---

---

---

---

---



---

---

---

---

---

---

---

---

These are some of the “treatments” that were used to contain and control the mentally ill.

Since mental illness was not seen at this time as a medical condition, the \_\_\_\_\_

\_\_\_\_\_

11

---

---

---

---

---

---

---

---

### Mental Health Reform


The unfortunate results of the Mental Hygiene Movement:

\_\_\_\_\_

\_\_\_\_\_

\_\_\_\_\_

\_\_\_\_\_



12

---

---

---

---

---

---

---

---

Until the 1970's, most people with mental illness were warehoused in psychiatric institutions. The conditions in most psychiatric hospitals were terrible and often inhumane.

---



---



---

13

---



---



---



---



---



---



---

### Deinstitutionalization

This federal policy \_\_\_\_\_  
from long-term care facilities to

---



---



---

14

---



---



---



---



---






---



---

### Did it work as promised?

- ☑ Deinstitutionalization has been \_\_\_\_\_  
\_\_\_\_\_
- ☑ Accounting for a very large percentage of the homeless population.  
\_\_\_\_\_

---



---



---



---




---



---



---



The community mental health movement has had many successes, but continue to remain underfunded.

16

---

---

---


---

---

---

---

---



Next class...

How are disorders assessed?

17

---

---

---

---

---

---

---

---