



Historical Perspectives on Abnormal Behavior

Chapter One
Overview to Understanding Abnormal Behavior

1



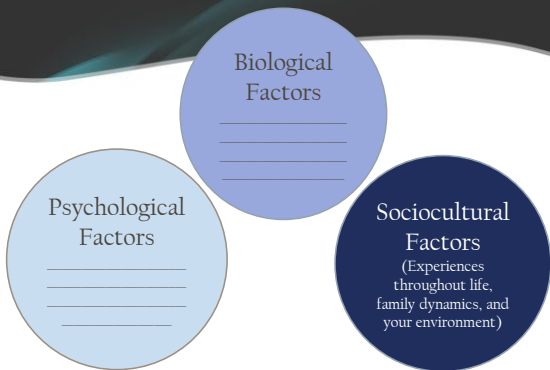
Class Objectives

- Historical Perspectives
- What is Clinical Assessment and why is it used?
- What assessment methods do professionals use?

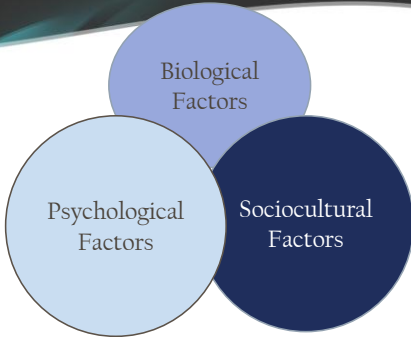
2



What Causes Abnormal Behavior?



When these factors come together in the perfect combination, psychological disorders emerge



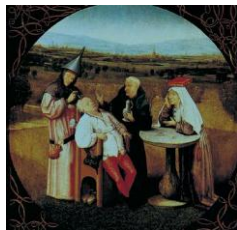
Where did it all begin?

- ❑ Abnormal behavior and psychological disorders have been documented for thousands of years.
- ❑ Although many early “treatments” are now recognized as cruel and ineffective, they were considered state-of-the-art for their times.

5

Treatment was influenced by the social perception of mental illness

❑ Very early in history (500-700 A.D) the problem was



- disorders may have natural causes and should be treated as a _____

6



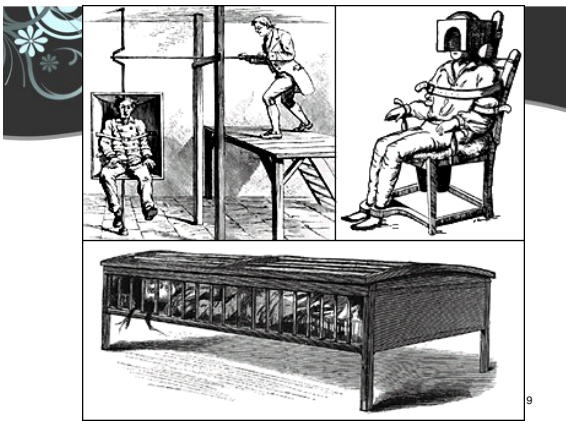
Later in history (500-1700 A.D) due to the influence of the church witchcraft and demonic





People with psychological disorders or "madmen" were seen as dangerous animals who should be caged in order to protect society.







These are some of the “treatments” that were used to contain and control the mentally ill.

Since mental illness was not seen at this time as a medical condition, _____

10



Mental Health Reform

The unfortunate results of the Mental Hygiene Movement:

- _____
- _____



11



Until the 1970's, most people with mental illness were warehoused in psychiatric institutions. The conditions in most psychiatric hospitals were terrible and often inhumane.

These conditions contributed to the

12



Deinstitutionalization

This federal policy promoted the release of psychiatric patients from long-term care facilities _____

13

Did it work as promised?

- Deinstitutionalization has been criticized for failing to live up to its expectations.
- Accounting for a very large percentage of the homeless population.





The community mental health movement has had many successes, but continue to remain underfunded.

15



Assessment

How are psychological disorders evaluated?



Chapter 3 Assessment

16

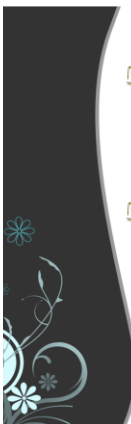


What is Assessment?

Assessment is a procedure in which a clinician evaluates a person in terms of the _____

This evaluation occurs in a person who may have a psychological disorder.





Clinical Assessment

Psychological assessment uses a broad-range of measurement techniques.

Only after a person is assessed can a diagnosis be given.

- This is the process of determining whether

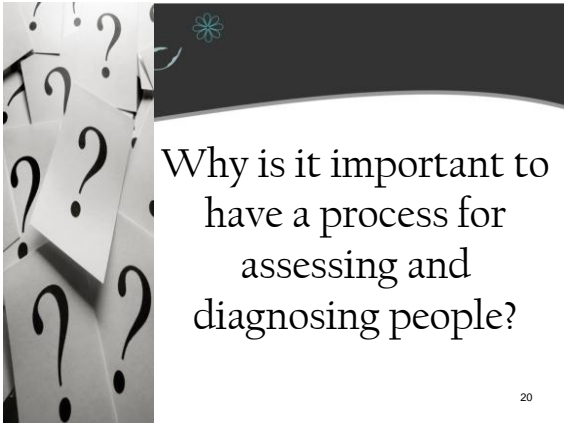
-

18



The diagnosis of a psychological disorder represents a way of classifying patterns of abnormal behavior

19



Why is it important to have a process for assessing and diagnosing people?

20



Classification promotes Universal standards

Classification is the core of scientific study, which allows

Classification facilitates research on etiology and treatments of disorders, including best practices.

21



There is much debate on the classification of mental disorders

Some feel that diagnosis of psychological disorders do more harm than good, fail to truly address the individual's problem and create dehumanizing labels

22



Next class

More assessment methods!

23



Next class...

How are disorders assessed?

-Chapter 3: Assessment

24
