

# Prenatal Development

Chapter 9  
Life Span Development I

---

---

---

---

---

---

---

---

CLASS OBJECTIVE:  
We will examine the biological process of human development.



---

---

---

---


---

---

---

---

**TRUE OR FALSE...**  
The study of development begins at birth.



**FALSE!**  
The study of development begins at the moment of conception

---

---

---

---

---

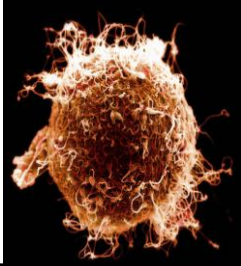
---

---

---

## The real “Amazing Race”

- Every human begins very simply with the meeting of one sperm and one ovum (egg).



---

---

---

---

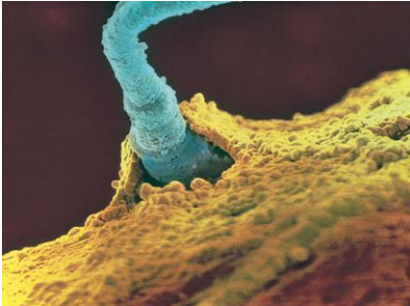
---

---

---

---

The sperm “fight” to be the only one that can successfully fertilize the egg.



---

---

---

---

---

---

---

---

## The first form of life



- At conception the genetic material from each parent is fused.
- A living cell called the zygote is formed within hours.

---

---

---

---

---

---

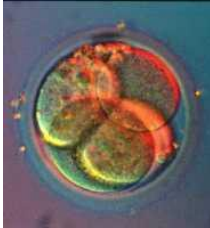
---

---

True or false?

50% of fertilized eggs are lost before a woman finds out she's pregnant.

**TRUE!**



---

---

---

---

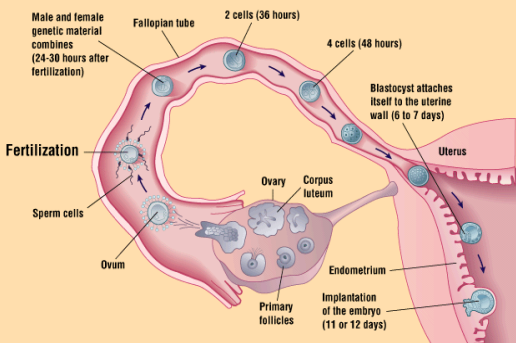
---

---

---

---

**The Journey of the Ovum Toward the Uterus**



---

---

---

---

---

---

---

---

From Zygote to human??

- The Zygote will become transformed through a process of three stages:
- Germinal period- The first two weeks after conception
- Embryonic period- The 3<sup>rd</sup> to the 8<sup>th</sup> week after conception
- Fetal period- The ninth week after conception to birth

---

---

---

---

---

---

---

---

## Hello Embryo!

- During the *Embryonic stage*, it is still not recognizable as a human.
- The *neural tube* forms (at 22 days), which becomes central nervous system



---

---

---

---

---

---

---

---

## 4 Week Embryo



---

---

---

---

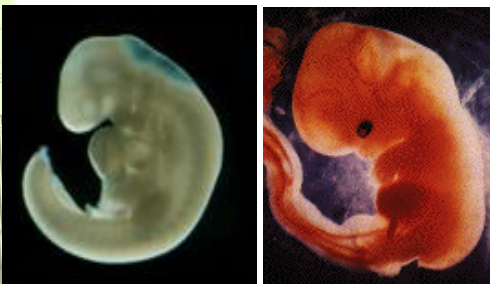
---

---

---

---

From 4 to 6 weeks...  
Look at the difference!



---

---

---

---

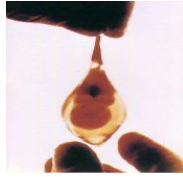
---

---

---

---

## 6-9 week Embryo



---

---

---

---

---

---

---

---

## TRUE OR FALSE?

- Approximately 20% of all embryos are aborted spontaneously
- **TRUE!** This is most often due to chromosomal abnormalities

---

---

---

---

---

---

---

---

## 8 Weeks



- The embryo is now recognizable as a human
  - The embryo now weighs 1 gram and is 1 inch long
- All the basic organs and body parts of a human being (except sex organs)
  - The "tail" is no longer visible and is now incorporated into the lower spine

---

---

---

---

---

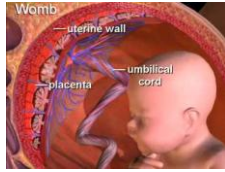
---

---

---

## The placenta also forms during this early period

The placenta is a mass of tissue attached to the uterine wall that acts as a life-support system for the fetus



- Connects its circulatory system with the mother

- The embryo and placenta are connected by the umbilical cord

---

---

---

---

---

---

---

---

## The Fetus Week 9-Birth



- The Brain grows dramatically (6 times in size) and becomes responsive during this time.

- At 22 weeks the fetus reaches the "Age of viability", which is the age a preterm baby can survive.

- There is only a 50% survival rate at 26 weeks

---

---

---

---

---

---

---

---

## The Brain **MUST** be able to sustain the body for survival

Without proper brain development, the most advanced technology cannot keep the body alive

---

---

---

---

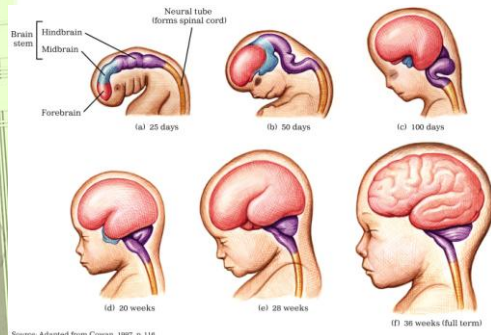
---

---

---

---

## It's All About the Brain!



---

---

---

---

---

---

---

---

Research shows that fetuses can develop sight very early in the womb.

**FALSE!**



---

---

---

---

---

---

---

---

It was previously thought that emotions were only expressed after birth



---

---

---

---

---

---

---

---

## Next Class...

- What factors can influence prenatal development?

---

---

---

---

---

---

---